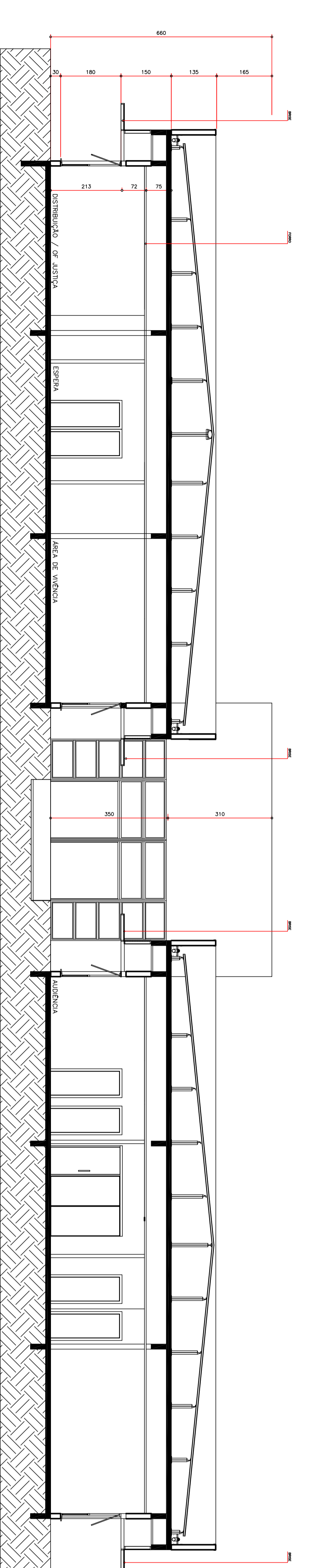
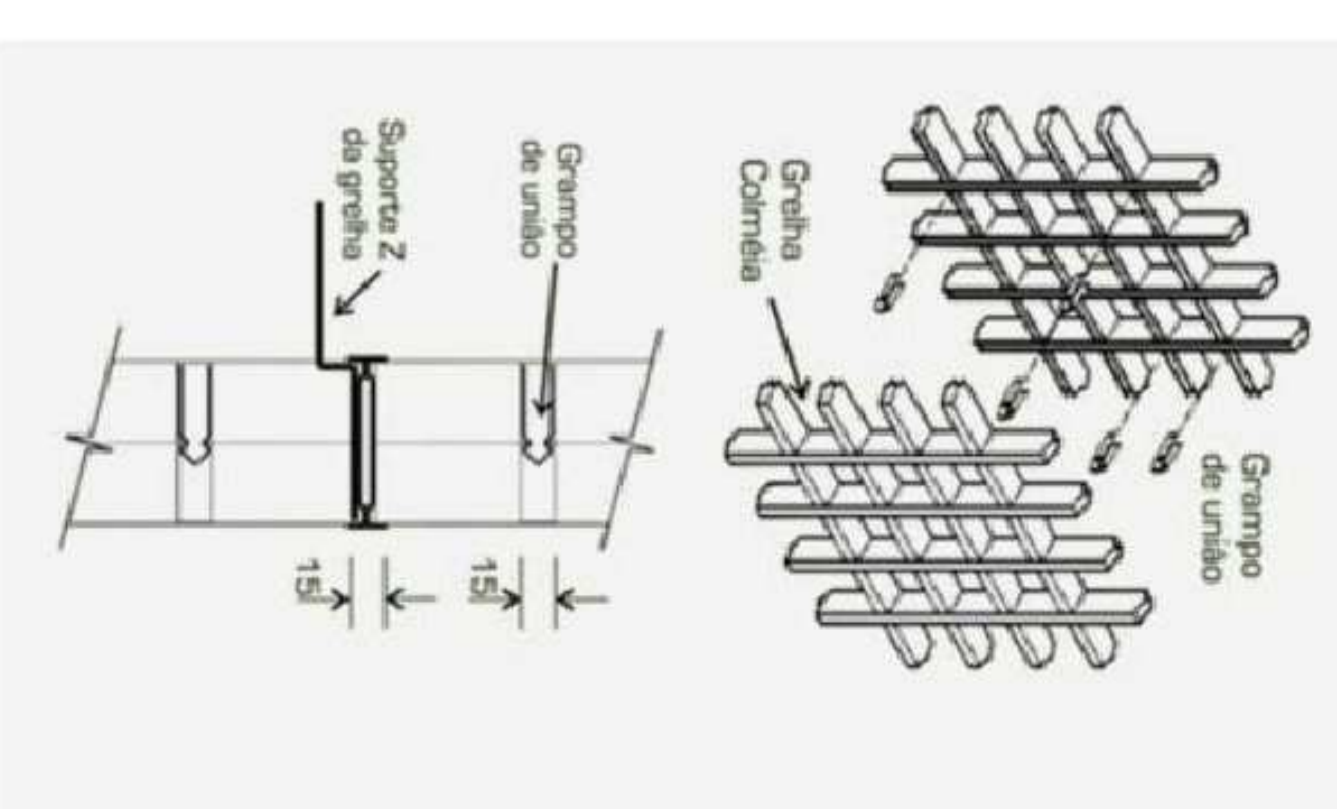
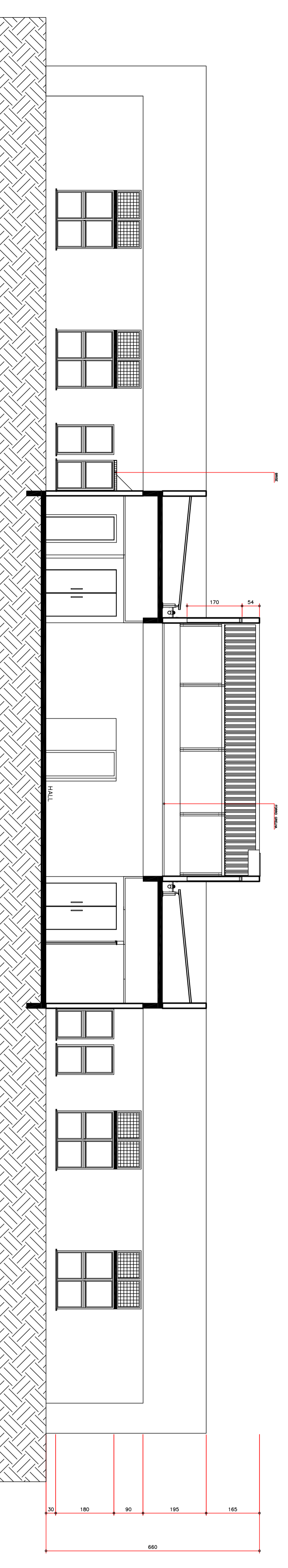


LÍNEA DE ACOMODACIONES		LOCAL	
1	ALBERGUE	1	ALBERGUE
2	ALBERGUE	2	ALBERGUE
3	ALBERGUE	3	ALBERGUE
4	ALBERGUE	4	ALBERGUE
5	ALBERGUE	5	ALBERGUE
6	ALBERGUE	6	ALBERGUE
7	ALBERGUE	7	ALBERGUE
8	ALBERGUE	8	ALBERGUE
9	ALBERGUE	9	ALBERGUE
10	ALBERGUE	10	ALBERGUE
11	ALBERGUE	11	ALBERGUE
12	ALBERGUE	12	ALBERGUE
13	ALBERGUE	13	ALBERGUE
14	ALBERGUE	14	ALBERGUE
15	ALBERGUE	15	ALBERGUE
16	ALBERGUE	16	ALBERGUE
17	ALBERGUE	17	ALBERGUE
18	ALBERGUE	18	ALBERGUE
19	ALBERGUE	19	ALBERGUE
20	ALBERGUE	20	ALBERGUE
21	ALBERGUE	21	ALBERGUE
22	ALBERGUE	22	ALBERGUE
23	ALBERGUE	23	ALBERGUE
24	ALBERGUE	24	ALBERGUE
25	ALBERGUE	25	ALBERGUE
26	ALBERGUE	26	ALBERGUE
27	ALBERGUE	27	ALBERGUE
28	ALBERGUE	28	ALBERGUE
29	ALBERGUE	29	ALBERGUE
30	ALBERGUE	30	ALBERGUE
31	ALBERGUE	31	ALBERGUE
32	ALBERGUE	32	ALBERGUE
33	ALBERGUE	33	ALBERGUE
34	ALBERGUE	34	ALBERGUE
35	ALBERGUE	35	ALBERGUE
36	ALBERGUE	36	ALBERGUE
37	ALBERGUE	37	ALBERGUE
38	ALBERGUE	38	ALBERGUE
39	ALBERGUE	39	ALBERGUE
40	ALBERGUE	40	ALBERGUE
41	ALBERGUE	41	ALBERGUE
42	ALBERGUE	42	ALBERGUE
43	ALBERGUE	43	ALBERGUE
44	ALBERGUE	44	ALBERGUE
45	ALBERGUE	45	ALBERGUE
46	ALBERGUE	46	ALBERGUE
47	ALBERGUE	47	ALBERGUE
48	ALBERGUE	48	ALBERGUE
49	ALBERGUE	49	ALBERGUE
50	ALBERGUE	50	ALBERGUE
51	ALBERGUE	51	ALBERGUE
52	ALBERGUE	52	ALBERGUE
53	ALBERGUE	53	ALBERGUE
54	ALBERGUE	54	ALBERGUE
55	ALBERGUE	55	ALBERGUE
56	ALBERGUE	56	ALBERGUE
57	ALBERGUE	57	ALBERGUE
58	ALBERGUE	58	ALBERGUE
59	ALBERGUE	59	ALBERGUE
60	ALBERGUE	60	ALBERGUE
61	ALBERGUE	61	ALBERGUE
62	ALBERGUE	62	ALBERGUE
63	ALBERGUE	63	ALBERGUE
64	ALBERGUE	64	ALBERGUE
65	ALBERGUE	65	ALBERGUE
66	ALBERGUE	66	ALBERGUE
67	ALBERGUE	67	ALBERGUE
68	ALBERGUE	68	ALBERGUE
69	ALBERGUE	69	ALBERGUE
70	ALBERGUE	70	ALBERGUE
71	ALBERGUE	71	ALBERGUE
72	ALBERGUE	72	ALBERGUE
73	ALBERGUE	73	ALBERGUE
74	ALBERGUE	74	ALBERGUE
75	ALBERGUE	75	ALBERGUE
76	ALBERGUE	76	ALBERGUE
77	ALBERGUE	77	ALBERGUE
78	ALBERGUE	78	ALBERGUE
79	ALBERGUE	79	ALBERGUE
80	ALBERGUE	80	ALBERGUE
81	ALBERGUE	81	ALBERGUE
82	ALBERGUE	82	ALBERGUE
83	ALBERGUE	83	ALBERGUE
84	ALBERGUE	84	ALBERGUE
85	ALBERGUE	85	ALBERGUE
86	ALBERGUE	86	ALBERGUE
87	ALBERGUE	87	ALBERGUE
88	ALBERGUE	88	ALBERGUE
89	ALBERGUE	89	ALBERGUE
90	ALBERGUE	90	ALBERGUE
91	ALBERGUE	91	ALBERGUE
92	ALBERGUE	92	ALBERGUE
93	ALBERGUE	93	ALBERGUE
94	ALBERGUE	94	ALBERGUE
95	ALBERGUE	95	ALBERGUE
96	ALBERGUE	96	ALBERGUE
97	ALBERGUE	97	ALBERGUE
98	ALBERGUE	98	ALBERGUE
99	ALBERGUE	99	ALBERGUE
100	ALBERGUE	100	ALBERGUE

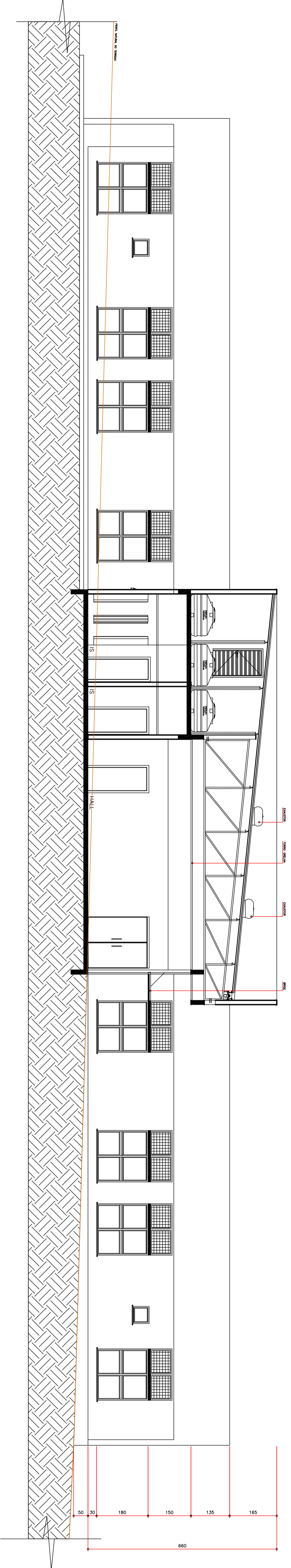
Sistema de Fixação



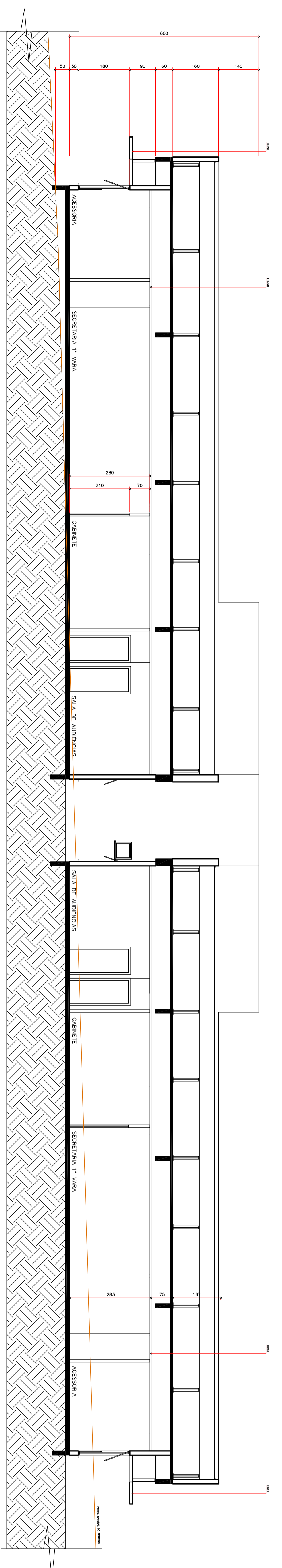
CORTE A
ESC.: 1/75



CORTE B
ESC.: 1/75



CORTE C
ESC.: 1/75



CORTE D
ESC.: 1/75

FORUM DO TRABALHO DE TOLEDO

Av. Dra Zilda Arns Neumann esquina com rua Esteliano Sacchi
Tribunal Regional do Trabalho de 9ª Região

ESTABELECIMENTO DE PROJETOS:

- TERRENO: 4.736,90 m²
- A-CONSISTIR: 1.511,40m²
- GABINETE: 9,00 m²
- Área de circulação interna: 1.520,40 m²
- Área de circulação externa: 1.145,10 m²
- ÁREA PERMANENTE (cm 25%): 44,00%
- COEFICIENTE DE APROVEITAMENTO: 0,32

PROJETO:

PROJETO Nº 03/03/08

DATA DE EMISSÃO: 15/07/2016

PROJETA: Mônica

INDICADA